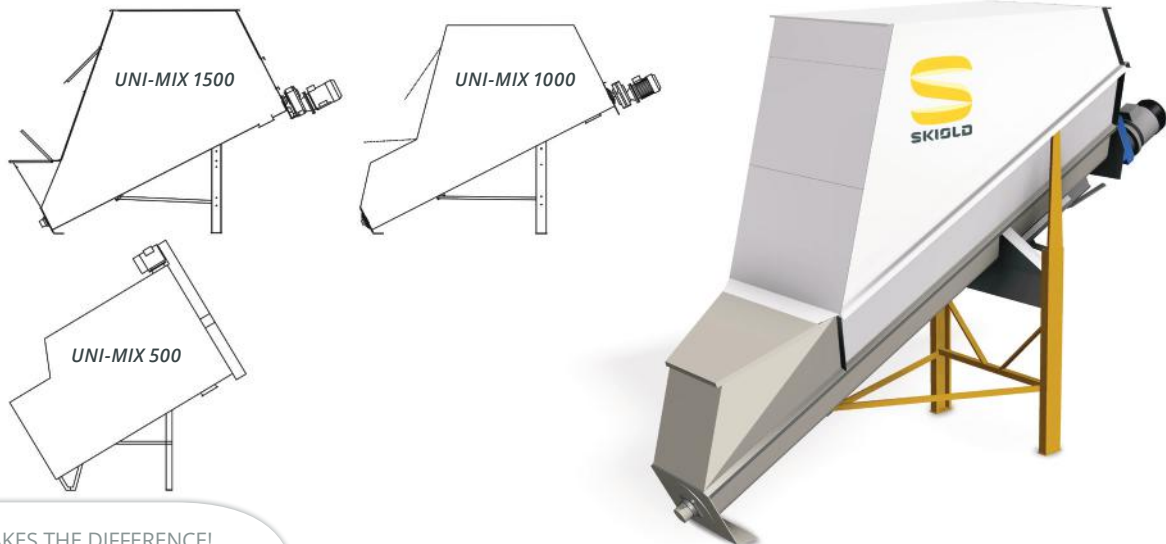




## SKIOLD INCLINED MIXER



SKIOLD MAKES THE DIFFERENCE!

### SKIOLD UNI-MIX INCLINED MIXER 500/1000/1500

Also capable of mixing small quantities

Easily accessible concentrate hopper

Efficient - even with fat and molasses

Suitable for placing on load cells

Sturdy construction with gear motor drive

High mixing accuracy - also in moist materials



# SKIOLD UNI-MIX 500/1000/1500

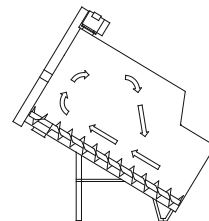
The diagonal mixer is suitable for accurate mixing of almost any kind of raw material in the form of meal or granulate. It is possible to add liquid raw material such as fat, molasses or oil during the mixing process. The mixing principle based on a large, slowly

rotating bottom auger is gentle to the structure of the raw material which makes the diagonal mixer suitable for mixing of feed for cattle containing crushed material. Mixing of CCM is possible.

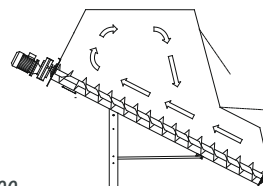
## TECHNICAL SPECIFICATIONS

|  | UNI-MIX 500       | UNI-MIX 1000 | UNI-MIX 1500 |
|--|-------------------|--------------|--------------|
| Mixing capacity (t/h)                          | 1                 | 3            | 4,5          |
| Batch size (dry ingredients, kg)               | 500               | 1000         | 1500         |
| Emptying time (minutes)                        | 6-8               | 8-10         | 10-12        |
| Mixing time (dry ingredients, minutes)         | 10-15             | 10-15        | 10-15        |
| Mixing time (liquid ingredients < 3%, minutes) | 15-20             | 15-20        | 15-20        |
| Mixing accuracy                                | 1:10.000          | 1:100.000    | 1:100.000    |
| Motor size (kW)                                | 2,2               | 4            | 5,5          |
| Weight empty mixer (kg)                        | 230               | 440          | 465          |
| Liquid max.                                    | 4%                | 6%           | 6%           |
| Mixer angle                                    | 30°               | 27°          | 27°          |
| Transmission                                   | Belt, chain drive | Gear motor   | Gear motor   |

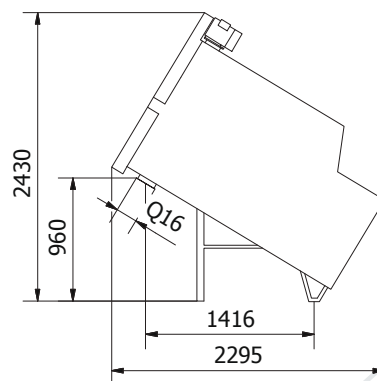
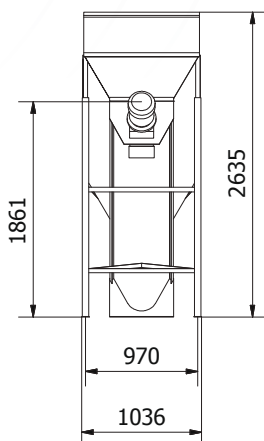
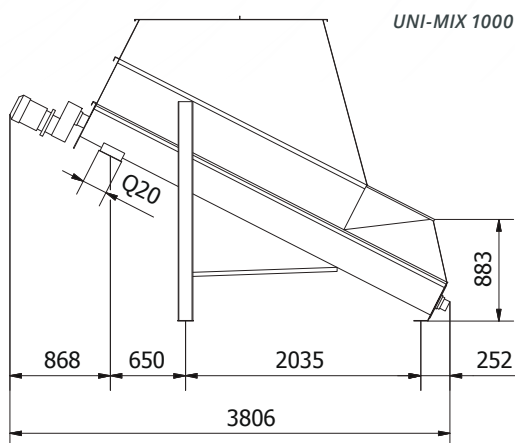
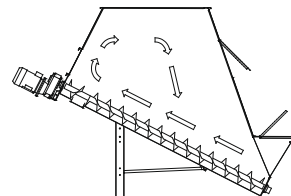
UNI-MIX 500



UNI-MIX 1000



UNI-MIX 1500



UNI-MIX 500

