

SPECIFICATIONS & CAPACITIES

MODELS	L1000	L1500	L2000	L3000	L4000	L5000	L6000
Dryer + Additional Holding, bu (m³)	434 + 297 (15.3 + 10.5)	604 + 313 (21.3 + 11.0)	710 + 317 (25.0 + 11.2)	990 + 333 (34.9 + 11.7)	1,269 + 349 (44.7 + 12.3)	1,549 + 366 (54.6 + 12.9)	1,829 + 382 (64.5 + 13.5)
Total Holding, bu (m³)	731 (25.8)	917 (32.3)	1,027 (36.2)	1,323 (46.6)	1,618 (57.0)	1,915 (67.5)	2,211 (78.0)
Column Thickness, (cm)	12" (30.5)	12" (30.5)	12" (30.5)	12" (30.5)	12" (30.5)	12" (30.5)	12" (30.5)
Overall Height¹ / Width, (m)	18'-3" / 7'-10" (5.56 / 2.39)	23'-3" / 12'-3" (7.09 / 3.73)	26'-3" / 12'-3" (8.00 / 3.73)	34'-3" / 12'-3" (10.44 / 3.73)	42'-3" / 12'-3" (12.88 / 3.73)	50'-3" / 12'-3" (15.32 / 3.73)	58'-3" / 12'-3" (17.75 / 3.73)
Grain Column / Overall Length², (m)	24'-0" / 32'-6" (7.32 / 9.91)	24'-0" / 35'-8" (7.32 / 10.87)	24'-0" / 35'-8" (7.32 / 10.87)	24'-0" / 35'-8" (7.32 / 10.87)	24'-0" / 35'-8" (7.32 / 10.87)	24'-0" / 35'-8" (7.32 / 10.87)	24'-0" / 35'-8" (7.32 / 10.87)
top of dryer Fan Motor Size³, HP (kW) bottom of dryer	15 (11.2) / 30 (22.4)	30 (22.4) 20 (14.9) / 20 (14.9)	15 (11.2) / 30 (22.4) 20 (14.9) / 20 (14.9)	15 (11.2) / 30 (22.4) 1 x 30 (22.4) 20 (14.9) / 20 (14.9)	15 (11.2) / 30 (22.4) 2 x 30 (22.4) 20 (14.9) / 20 (14.9)	15 (11.2) / 30 (22.4) 3 x 30 (22.4) 20 (14.9) / 20 (14.9)	15 (11.2) / 30 (22.4) 4 x 30 (22.4) 20 (14.9) / 20 (14.9)
Level / Unload Auger Motor Size, HP (kW)	5 / 1.5 (3.7 / 1.1)	5 / 1.5 (3.7 / 1.1)	5 / 1.5 (3.7 / 1.1)	10 / 3 (7.5 / 2.2)	10 / 3 (7.5 / 2.2)	10 / 3 (7.5 / 2.2)	10 / 3 (7.5 / 2.2)
Expandability	Up to 3 Mods	Up to 3 Mods	Up to 3 Mods	Up to 6 Mods	Up to 6 Mods	Up to 6 Mods	Up to 6 Mods
Electrical Full Load Amps 230V / 460V 208V / 575V (380V)	161 / 79 177 / 70 (95)	222 / 110 244 / 94 (132)	262 / 129 288 / 110 (156)	344 / 170 379 / 143 (205)	414 / 206 456 / 171 (248)	484 / 241 534 / 199 (290)	554 / 276 612 / 227 (332)
ALL-HEAT MODE	L1000	L1500	L2000	L3000	L4000	L5000	L6000
Avg / Max Burner Operating, MMBTU/hr (kW thermal)⁴	6.36 / 9.36 (1,864 / 2,743)	9.62 / 14.17 (2,819 / 4,153)	11.59 / 17.07 (3,397 / 5,003)	15.98 / 23.53 (4,683 / 6,896)	20.37 / 30.00 (5,970 / 8,792)	24.75 / 36.46 (7,254 / 10,685)	29.14 / 42.93 (8,540 / 12,582)
Drying Capacity, Shelled Corn, 20%-15%⁵,⁶,⁷ wet bu/hr (metric tonnes/hr) dry bu/hr (metric tonnes/hr)	up to 1,320 (32.7) 1,270 (30.3)	up to 1,900 (47.0) 1,830 (43.7)	up to 2,305 (57.1) 2,220 (53.0)	up to 3,175 (78.6) 3,060 (73.0)	up to 4,060 (100.5) 3,910 (93.3)	up to 4,950 (122.5) 4,770 (113.8)	up to 5,810 (143.8) 5,600 (133.7)
Drying Capacity, Shelled Corn, 25%-15%⁵,⁶,⁷ wet bu/hr (metric tonnes/hr) dry bu/hr (metric tonnes/hr)	up to 665 (17.5) 600 (14.3)	up to 975 (25.7) 880 (21.0)	up to 1,150 (30.3) 1,040 (24.8)	up to 1,615 (42.6) 1,460 (34.8)	up to 2,060 (54.4) 1,860 (44.4)	up to 2,525 (66.6) 2,280 (54.4)	up to 2,965 (78.2) 2,680 (64.0)
HEAT + COOL MODE	L1000	L1500	L2000	L3000	L4000	L5000	L6000
Avg / Max Burner Operating, MMBTU/hr (kW thermal)⁴,⁸	4.39 / 6.47 (1,287 / 1,896)	7.01 / 10.32 (2,054 / 3,024)	8.97 / 13.21 (2,629 / 3,871)	10.74 / 15.83 (3,148 / 4,639)	15.13 / 22.29 (4,434 / 6,533)	19.52 / 28.76 (5,721 / 8,429)	23.91 / 35.22 (7,007 / 10,322)
Drying Capacity, Shelled Corn, 20%-15%⁵,⁷,⁸ wet bu/hr (metric tonnes/hr) dry bu/hr (metric tonnes/hr)	up to 745 (18.4) 700 (16.3)	up to 1,115 (27.6) 1,050 (24.5)	up to 1,405 (34.8) 1,320 (30.8)	up to 1,805 (44.7) 1,700 (39.6)	up to 2,425 (60.0) 2,280 (53.1)	up to 3,050 (75.5) 2,870 (66.9)	up to 3,690 (91.3) 3,470 (80.9)
Drying Capacity, Shelled Corn, 25%-15%⁵,⁷,⁸ wet bu/hr (metric tonnes/hr) dry bu/hr (metric tonnes/hr)	up to 440 (11.6) 390 (9.1)	up to 680 (17.9) 600 (14.0)	up to 850 (22.4) 750 (17.5)	up to 1,065 (28.1) 940 (21.9)	up to 1,475 (38.9) 1,300 (30.3)	up to 1,880 (49.6) 1,660 (38.7)	up to 2,265 (59.8) 2,000 (46.6)

¹ Add 24" (61m) for a 24" dryer stand set or 36" (92m) for a 36" dryer stand set.

² Add 1'-0" (30m) if remote cabinet is mounted to the dryer.

³ For modules which contain two fans, the fan motor sizes are shown as: Lower / Upper.

⁴ Operating burner capacities are based on a 150 deg F (83 deg C) temperature rise for average and 200 deg F (111 deg C) temperature rise for maximum.

⁵ Based on 220 deg F (104 deg C) heat plenum(s) temperature.

⁶ Discharging at 17% moisture.

⁷ Capacities in metric tonnes/hr are based on a grain bulk density of: 749 kg/m³ (wet @ 25% moisture), 703 kg/m³ (wet @ 20% moisture), 677 kg/m³ (dry @ 17% moisture), 661 kg/m³ (dry @ 15% moisture).

⁸ Based on bottom plenum in cooling mode for L1000-L2000 and bottom two (2) plenums in cooling mode for models L3000-L6000.

⁹ The information contained herein is intended to assist our customers in selecting the grain drying system that they believe best meets their unique preferences and needs. The performance figures and capacities presented in this document are only estimates, based on calculated simulations, and do not constitute express or implied warranties. Many factors influence the grain drying process, including ambient temperature, relative humidity, grain variety, grain quality, grain temperature, dryer operating temperatures, dryer add-ons and accessories, and dryer condition, maintenance and operation.

At Mathews Company, we continuously strive to improve our products. Accordingly, changes may occur that are not reflected in the specifications and capacities contained in this brochure.

Your Authorized M-C Dealer is:



Mathews Company
www.mathewscountry.com

Crystal Lake, IL
phone: 1-815-459-2210
fax: 1-815-459-5889
email: mcsales@mathewscountry.com



NEXT GENERATION **LEGACY**SERIES EXPANDABLE **DRYERS**



GRAIN DRYER SPECIALISTS



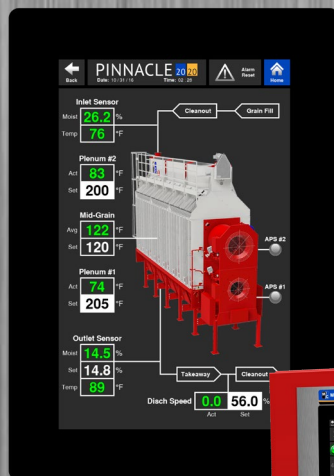
NEXT GENERATION LEGACY SERIES

Innovation • Expertise • Quality

PINNACLE 20|20 CONTROL SYSTEM

Experience the ease
of dual touch screens
with Pinnacle 20|20

- PLC-Based Dryer Control System
- Dual 10" HD Touchscreens
- Easy User Interface
- 24 VDC Control Safety Circuit



Quick Glance

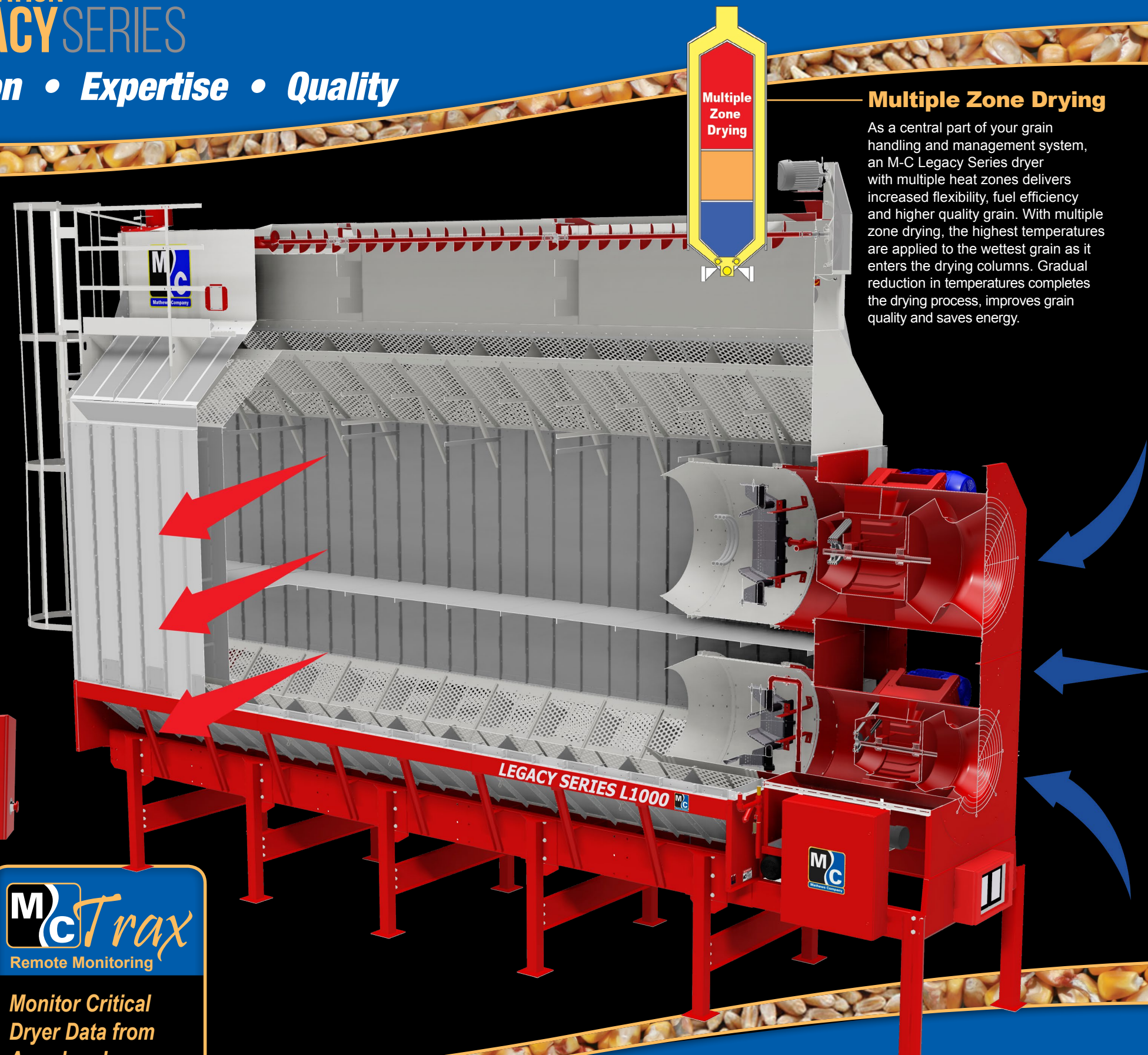
- Easier to Navigate
- Bright, Easy to See Graphics
- More Info Available within 2 Screen Touches Away
- Better Diagnostics

MANUAL CONTROL SYSTEM

Want the simplest system available? M-C offers a manual control system without all the bells and whistles of Pinnacle 20|20. Ask your dealer for more information.



Monitor Critical
Dryer Data from
Anywhere!



Multiple Zone Drying

As a central part of your grain handling and management system, an M-C Legacy Series dryer with multiple heat zones delivers increased flexibility, fuel efficiency and higher quality grain. With multiple zone drying, the highest temperatures are applied to the wettest grain as it enters the drying columns. Gradual reduction in temperatures completes the drying process, improves grain quality and saves energy.

Features

Multi-Zone Drying allows independent temperature control in each plenum for improved grain quality and energy savings.

High Efficiency Burners with stainless steel and cast aluminum construction feature high efficiency, low emissions operation.

Quiet Drying with commercial grade in-line centrifugal fans which reduce noise, while increasing efficiency.

Long Lasting Screens are available in stainless steel, aluminum or galvanized, and come in various perforations for different types of grain.

Walkways are continuous around the perimeter of the dryer (available option) for easy maintenance.

Large, Enclosed Wet Grain Hopper keeps the inside environment clean and the drying columns full, requiring fewer filling cycles.

16" Thick Perforated Peak Section feeds grain columns evenly.

10" U-Trough Unload Auger with quick release door at the bottom of the dryer.

Solid Welded Base allows for modular expansion.

Pinnacle 20|20 Control System featuring intuitive, dual 10" (25.4cm) HD touchscreens for ultimate control, customization and a built-in backup.

Moisture-Based Control is an available option featuring AccuDry™ technology which measures incoming and discharged grain moisture to control the discharge rate of the dryer, ensuring accurate and reliable moisture control.

High-Voltage Electrical System with a NEMA rated high voltage cabinet and main disconnect to protect motor starters, thermal overloads and electrical components from weather and dirt.



Read what customers are saying

"Those centrifugal fans are so quiet plus they move a lot of air. It freaked me out a couple times thinking the dryer actually stopped running, when it was just running so dang quiet!"
— S. Wendel, Iowa

"The first thing is simplicity, followed by efficiency, then a well built structure that will last for many years, back that with M-C's history of grain dryers - you can't go wrong."
— Mike K., Iowa