

HEATRITE™



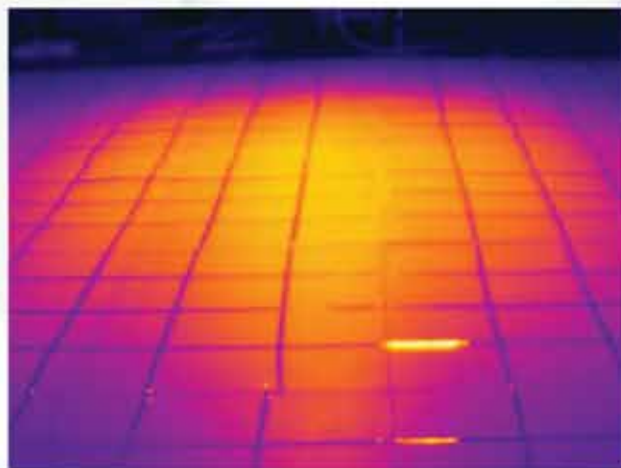
Heat-Rite™ U-Tube Low Intensity Infrared Heater.

Effective and Field-Proven Infrared Brooder Heaters

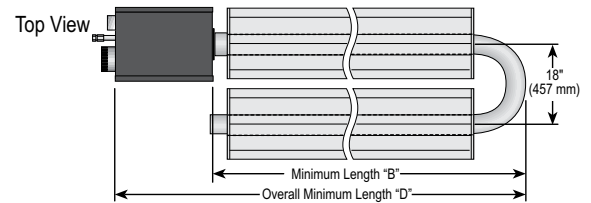
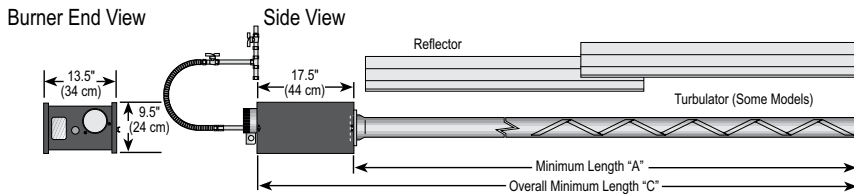
- Easy to install, operate and maintain
 - tool free access.
- Design flexibility from multiple inputs, lengths and configurations.
- Doesn't interfere with bird placement and catch out
 - mounted close to ceiling.
- Reliable operation in harsh environments with durable hot surface ignition.
- Limited three-year warranty.

Reduce Energy Use
By Up To
50%

*Increased radiant spread
from wide pattern hangers
specially designed for extra
wide poultry houses.*



Performance You Can Count On



Heat-Rite™ Model	VTU-80
Minimum Length of Straight Tube* [ft, in] A	20
Minimum Length of U-Tube* [ft, in] B	11, 7
Overall Minimum Length of Straight Tube [ft, in] C	21, 5.5
Overall Minimum Length of U-Tube [ft, in] D	13, 0.5
Input (Btu/h) x (1000)	80
Inlet Pressure [in wc] NG min.	4.6
LPG Propane min.	11.
NG & LPG Propane max.	14
Gas Connection	1/2"
Weights	
Overall Length of Tube and Accessory Packages [ft]	13, 0.5
Aluminized Tube with Aluminum Reflector [lb]	86
Aluminized Tube with Stainless Steel Reflector [lb]	113
Burner [lb]	40
Aluminized U-Tube with Aluminum End Caps [lb]	19
Aluminized U-Tube with Stainless Steel End Caps [lb]	20
All Models	
Fuel	NG or LPG Propane
Electrical Supply	120 V, 60 Hz, 1 A (Run) 5 A (Start)
Heat Exchanger Tubing	10 ft Sections, 4" dia, 16 Gauge, First 10 ft ALUMI-THERM® Steel Tubing [Remaining Heat Treated Aluminized]
Combustion Air Inlet dia	4"
Exhaust Flue dia	4"
Reflector and End Caps	.024 Aluminum [Optional - .024 Stainless Steel Typ 304]
Control System	Honeywell® SmartValve® II Combines Gas Valve and Hot Surface Electronic Ignition Control Fully Automatic, Four-Try, 100% Shut-Off, Prepurge, Auto Reset, LED Indicator Status
Approved As	Indoor (Vented or Unvented)
Certification	ANSI Z83.20/CSA 2.34, 2.17
Warranty	Three-Year Limited (Refer to Installation, Operation and Service Manual for Details)

Clearances to Combustibles** [in]		VTU-80
	Horizontal	Horiz.
	A	6
	B	44
	C	66
	D	44

* For additional lengths, please see the current Installation, Operation and Service Manual.

** Clearances B, C, D can be reduced by 50% for locations 25 ft (7 m) or more downstream of the burner. For other mounting options and associated clearances, complete installation, operation and service criteria, please see the current issue of the HEAT-RITE™ VTU Installation, Operation and Service Manual.

Installation Code and Annual Inspections: All installations and service of VAL-CO equipment

must be performed by a contractor qualified in the installation and service of equipment sold and supplied by VAL-CO and conform to all requirements set forth in the VAL-CO manuals and all applicable governmental authorities pertaining to the installation, service, operation and labeling of the equipment. To help facilitate optimum performance and safety, VAL-CO recommends that a qualified contractor annually inspect your VAL-CO equipment and perform service where necessary, using only replacement parts sold and supplied by VAL-CO. **This product is not for residential use.**

Further Information: Applications, engineering and detailed guidance on systems design, installation and equipment performance is available through VAL-CO representatives. Please contact us for any further information you may require, including the HEAT-RITE™ VTU Installation, Operation and Service Manual.



North America:
Phone: 800-99VALCO (800-998-2526)
Fax: (+1) 419-678-2200
E-mail: sales@val-co.com

International:
Phone: (+1) 419-678-8731
Fax: (+1) 419-678-2200
E-mail: intl.sales@val-co.com