



Fresh Ideas in Ventilation Technology.

An Investment In Value

Because your future depends on the health of your livestock, the quality of their environment can't be compromised – especially where ventilation and air quality are concerned. Even your equipment and buildings benefit from a ventilation system you can depend on. That's why behind the healthiest herds, flocks and profitable operations, you'll find superior ventilation products manufactured by VAL-CO®, the agribusiness ventilation system pioneer.

Automatic Air Replacement Fresh Air Inlets

The heart of a total ventilation system

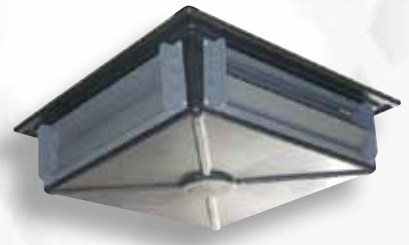


Design Features:

- Completely automatic for low maintenance air distribution year round – set them once and forget about them
- Automatically controls air velocity and volume according to fan speed, confinement conditions and prevailing weather
- Unique "Biflo" design allows draft-free air distribution through the confinement area
- Air replacement is gentle, even and fast – reducing the amount of fan operation
- Counter weighted valve assemblies automatically close when fans stop – eliminating heat loss and back drafts
- Inlet openings can be minimized or even closed during severe weather with the VAL-CO "Lock Tab System"
- Optional coating protects valve from power washing damage; standard on Power-Flo Inlet

Quad Flo

The Quad Flo is a traditional four-way negative pressure ceiling inlet, which is assembled from four single directional inlets.



Design Features:

- Single directional inlets are manually adjusted to direct air along the ceiling, toward the floor or closed
- Designed to deliver 1700 cfm at 0.15 in of water
- During minimum ventilation it will deliver 500 cfm at 0.05 in water
- PVC mounting frame, 18 attic sleeve and one inch polystyrene insulation board
- Made of UV stabilized polystyrene

Model	CFM	Rough Opening
I306*	1200	12-7/8"x22-5/8"
I310*	2400	16-1/2"x33-3/4"

* When ordering with the clad-covered valve add "C" behind the model number

Construction:

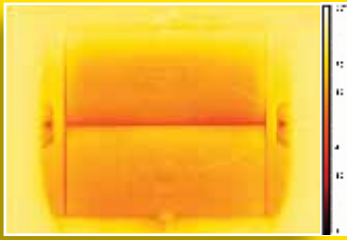
- One-piece single molded construction of tough, corrosion-resistant rigid polystyrene
- Durable, long lasting and aesthetically pleasing
- Available in sizes to fit your needs: 1200, or 2400 cfm per unit
- Easy to install
- Low maintenance

Model	CFM	Rough Opening
I320	1700	29"x29"



Performance You Can Count On

Model	CFM	Rough Opening
1406P	1400	16-7/16"x23-3/16"
1410P	2700	21-7/16"x32-15/16"



Performance at 0° F

Thermal Tested:

The Power-Flo Ceiling Inlets demonstrated superior results when tested in a certified laboratory under controlled and monitored conditions over a 60° temperature gradient of -30° F through 30° F.

Model	Size
R700	24" Chimney
R710	36" Chimney

Low Maintenance Fresh Air Ventilation Power-Flo Ceiling Inlets



The Fresh Air Ceiling Inlet System from VAL-CO® is the heart of a total ventilation system. Our superior design is cost effective, durable and easy to install and clean.

Design Features:

- Operated by a power actuator and regulated by your ventilation control program
- Controls air velocity and volume according to fan speed(s) and temperature for optimum animal comfort
- Unique "Biflo" design allows draft-free air distribution throughout the confinement area
- Reduced fan operation results in added cost savings due to precise, fast and gentle air replacement
- Unique design eliminates heat loss and back drafts

Construction:

- Rugged seamless rotationally molded construction meets or exceeds the performance of foam inlets
- Made of tough, non-corrosive polyethylene
- Available in 1400 or 2700 cfm sizes to fit your design needs
- Stands up to high pressure cleaning
- Complete with control cords, hardware and insulstop

Natural Flow Chimneys Consistent and Precise Control

Design Features:

- High R value eliminates condensation and saves energy
- 1" insulated, mechanical operating damper allows "air by design" exhaust
- One-piece construction reduces assembly & installation set-up time
- Self-squaring construction
- Top and bottom flange provide structural integrity
- Tri-fold design
- Easy installation

Construction:

- Attractive one-piece molded polyethylene chimney dome
- Sturdy 10 gauge structural aluminum dome mounting brackets
- White insulated UV resistant surfaces
- Operating cable kit included
- Rust-resistant hardware



Call your local **VAL-CO** representative or distributor for more information on these and our other fine products.

North America:

Phone: 800-99VALCO (800-998-2526)

Fax: (+1) 419-678-2200

E-mail: sales@val-co.com

International:

Phone: (+1) 419-678-8731

Fax: (+1) 419-678-2200

E-mail: intl.sales@val-co.com



Performance You Can Count On

www.val-co.com