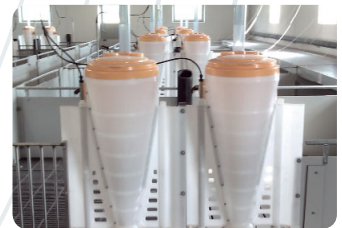
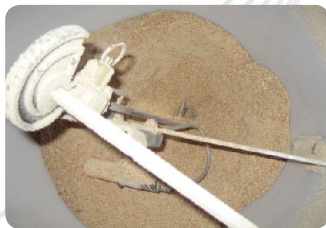




# MULTIPHASE FEEDING

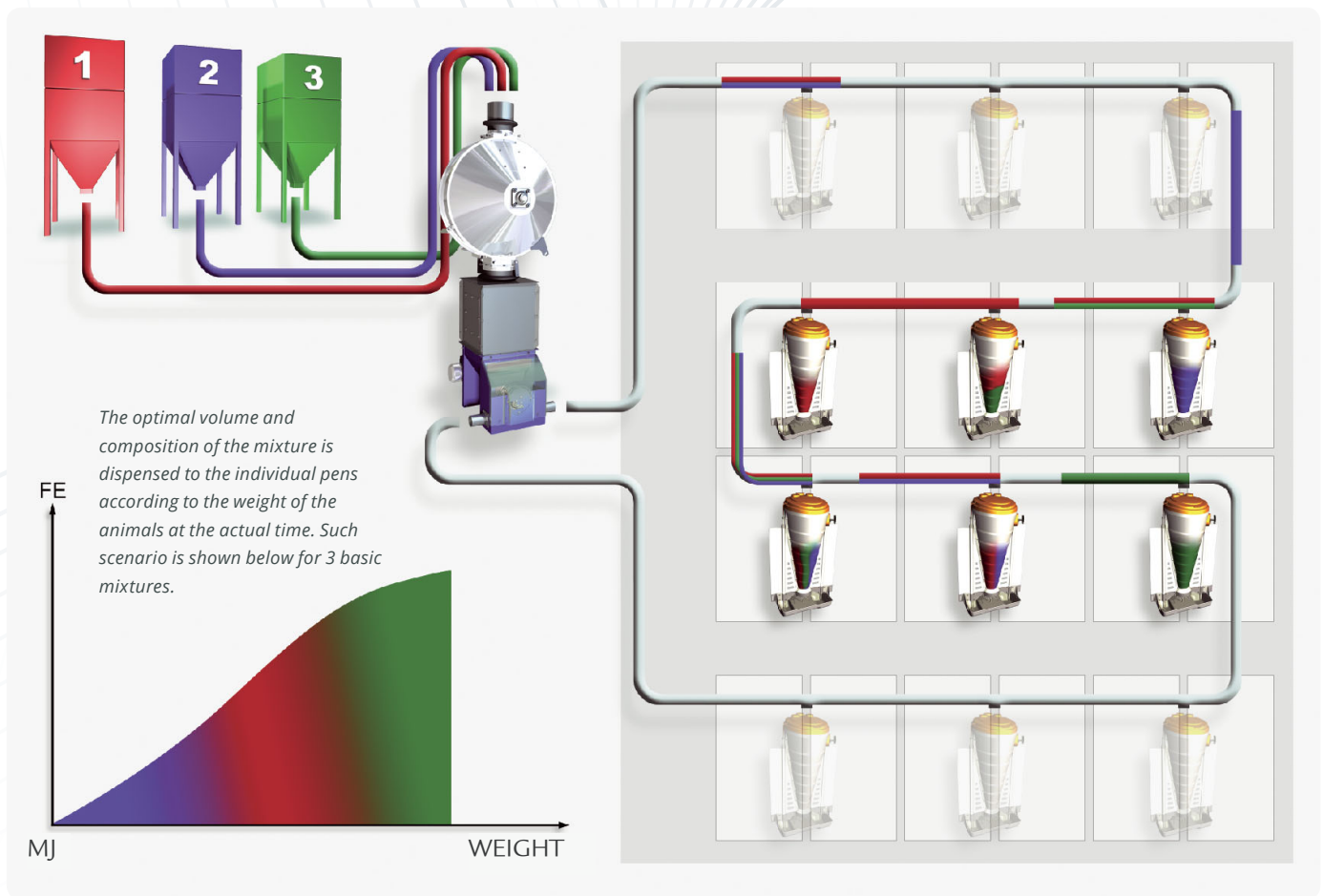


SKIOLD MAKES THE DIFFERENCE!



## TRANSPORK® MULTIPHASE FEEDING

- Controlling up to 2.000 feed valves and 10 mixing units on load cells
- Controlling the mill mix system including automatic adjustment of grinding degree (coarse to fine) on recipe level for the SKIOLD disc mill
- Up to 50 feed components in 40 silos
- Multiphase feeding on valve level
- Operation from PC with multinational user menu
- Efficiency reports on pen- or section level
- Restrictive or ad libitum feeding
- Connectable to PDA (hand held terminal)
- Possible to integrate with Agrosoft management program
- Possible to connect mini dosing unit (adding i.e. vitamin on valve level)



## Multiphase Feeding - Valve data & Feed Curves

### Valve Data

- Number of animals at the valve
- Dead/sold
- Actual weight in relation to feeding curves
- Feed plans
- Energy per day
- Correction data + / -
- Illnes curve
- Weight for pigs delivered
- Price for consumed feed
- Feed consumption
- Feed consumption per valve and section

- Feed costs per valve and section
- Possibility for time dispensing of small intake quantities
- Number of feed days (summary of days from date of entry)
- Defining various groups

### Feed Curves

- Up to 10 feeding curves

