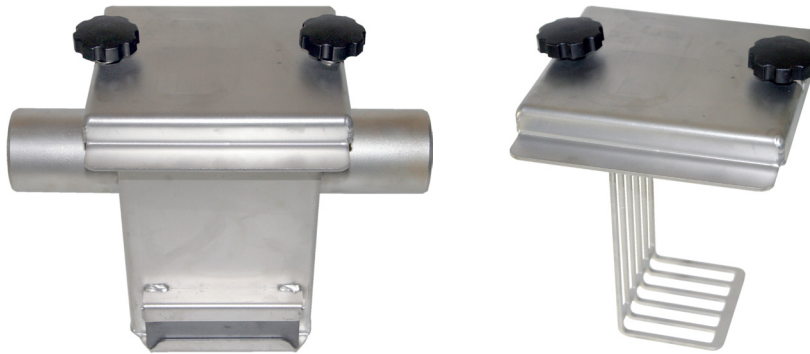




STONE TRAP



SKIOLD MAKES THE DIFFERENCE!

- The stone trap is designed to be mounted directly on the inlet hose, between the mixing tank and feed pump. Inlet and outlet are Ø 76MM, corresponding to the inner diameter of standard tubing between the mixing tank and feed pump.
- The stone trap is supplied with extra strong magnets, which are mounted on the outside of the stone trap to catch the magnetic metal particles in the liquid feed.
- The liquid feed must pass a grid inside the stone trap which creates a little turbulence that causes the heavier particles to fall to the bottom and not continue into the feed pump. This grid is also designed so that during cleaning the stone trap, it helps to remove the accumulated particles.
- A stone trap should be cleaned regularly, like mixing tank and other feeding equipment.



Item No.

311 000 105

Stone trap complete with hose and clamps



SKIOLD